

Health Career Display



New for 2016-2017

Editorial updates and clarifications have been made to guidelines. Round One rating sheet has been added. A Works Cited page is now required to be adhered to the back side of the display, according to the updated HOSA Style Sheet included in these guidelines. Attendance during Project Display Time is now required. The Round Two rating sheet has been updated.

Purpose: To encourage HOSA members to improve their ability to present themselves and communicate career information to others.

Description: Teams consisting of two (2) competitors shall develop a visual display of a specific career or cluster of careers in health. The display allows the students to express ideas through an artistic medium to highlight the benefits of a particular career focus. The students may also be judged on their ability to present themselves and communicate the career information to others.

Dress Code: Competitors must be in official HOSA uniform or in proper business attire. Bonus points will be awarded for [proper dress](#). Both team members must be properly dressed to receive bonus points.

- Rules and Procedures:**
1. Competitors in this event must be active members of HOSA-Future Health Professionals, in good standing in the division in which they are registered to compete (Middle School, Secondary or Postsecondary/Collegiate).
 2. Competitors must be familiar with and adhere to the [“General Rules and Regulations of the National HOSA Competitive Events Program \(GRR\).”](#)
 3. The display must be presented by a team of two. One health career or a cluster of related health careers may be presented. The career must be a HEALTH career. For a sample list of health careers, visit the [National Consortium for Health Science Education](#) and [Explore Health Careers](#) websites.

The Health Display:

4. The display is an integral part of the event presentation, but must stand alone as an effective illustration of the chosen career or career cluster, without battery or electricity use of any kind. Teams will be judged on how effectively the display informs others about the career or career cluster.
5. The work **must** be the work of the competitors, including the artistic aspects of the display. Allowable artwork may include:
 - Competitor produced illustrations, designs, and/or computer-generated graphics.
 - Clip art or other graphics used in compliance with copyright laws.
 - Photographs used in compliance with copyright laws.
 - Computer or machine generated lettering.
6. The display uses a single wall tri-fold presentation display board that is 48” x 36” unfolded, in any color, made of foam or corrugated cardboard. It must be able to stand on a standard conference table furnished on site. If 8 ft. tables or banquet rounds are used, there will be two displays per table. In addition to the presentation board, the

display may include models, mannequins, pamphlets, brochures, or any other method or combination of physical objects or props to display the project.

7. Computers, electronics, electricity, and batteries may **NOT** be used.
8. **DISPLAY MEASUREMENTS:**
Once positioned on the table with three-dimensional display items, the maximum dimensions are:

HEIGHT: 36 inches WIDTH: 48 inches DEPTH: 24 inches

The display will be measured by the Section Leader or Event Manager before judging begins, from a beginning point to the furthest point of the display.
 - Height will be measured from the tabletop to the highest point of anything on the display.
 - Width will be measured from the widest point of anything on the display to the opposite point.
 - Depth will be measured from the widest point of anything on the display to the opposite point.
 - Nothing may overlap the sides of the display table, with the exception of the table drape.
 - Dimensions include models, mannequins and all other display items.
 - Information or display items outside the dimensions will be considered part of the display and subject to point deductions.
9. Competitors are responsible for the safety and proper functioning of all equipment they bring to this event. Teams *may not* use any flames, body fluids, living organisms, sharps, or any equipment/materials, simulated or otherwise, that could expose anyone to risk of bodily harm or danger. Invasive procedures and skin puncturing of any kind are **prohibited**.
10. A Works Cited page must be adhered to the back side of the display according to the HOSA Style sheet, included in these guidelines.

The Competitive Process:

11. The team will have **fifteen (15) minutes to assemble the display**. Parts of the display may be done prior to competition. The time for assembly is to set up what the team has previously created in preparation for Round One judging.
12. **ROUND ONE DESCRIPTION:** Round One will be a preliminary round and competitors will not attend. Judges will view the assembled displays and will use the Round One rating sheets to rate each display.
13. The top middle school, secondary and postsecondary/collegiate teams from the preliminary round will advance to Round Two, for the oral presentation. ** Note: These instructions do not apply when there are fewer than 15 displays to be judged. When there are fewer than 15 displays in a division, all competitors will participate in the Round Two presentation.*
14. **ROUND TWO DESCRIPTION:** The two (2) member team will report back to the display at their assigned appointment time to present a five (5) minute prepared oral presentation to the judges. Paper or electronic notecards (on a tablet, smart phone, laptop, etc.) may be used for the oral presentation but may not be shown to judges. The presentation may include but is not limited to why they chose this career/career cluster, what they learned by researching this career/career cluster, what forms of research they used to complete the display, and what they included on the display and why.

15. Costumes and hand-held props are not permitted during the oral presentation.
16. **USE OF DISPLAY DURING PRESENTATION:** Visuals or display items used during the presentation portion of the event may be touched or picked up BUT MUST remain contained within the dimensions of the display. **Items removed from the display will be considered outside the dimensions of the display and subject to point deductions.**
17. Each team that advances to the presentation round will be judged on their ability to communicate information to the judges about the career area. During the five (5) minute prepared presentation, a time card will be shown with one (1) minute remaining and the presentation will be stopped at the end of the 5 minutes.
18. No equipment/supplies (except tables) will be provided for this event. All equipment/supplies needed must be provided by the team. It is the team's responsibility to ensure that all equipment is in working condition.
19. All competitors in this event at the International Leadership Conference are required to attend the HOSA Project Display Time for this event, as scheduled per the conference program. Team members will stand with their displays and share event experiences with conference delegates.
20. In the event of a tie, a tie breaker will be determined by the areas on the rating sheet section(s) with the highest point value in descending order.

Competitor Must Provide:

- Event guidelines – one per team (orientation)
- Display (48" x 36" tri-fold board without electricity or battery) w/Works Cited page attached
- Index cards or electronic notecards for presentation (optional)
- Plain, white cloth table drape (optional)

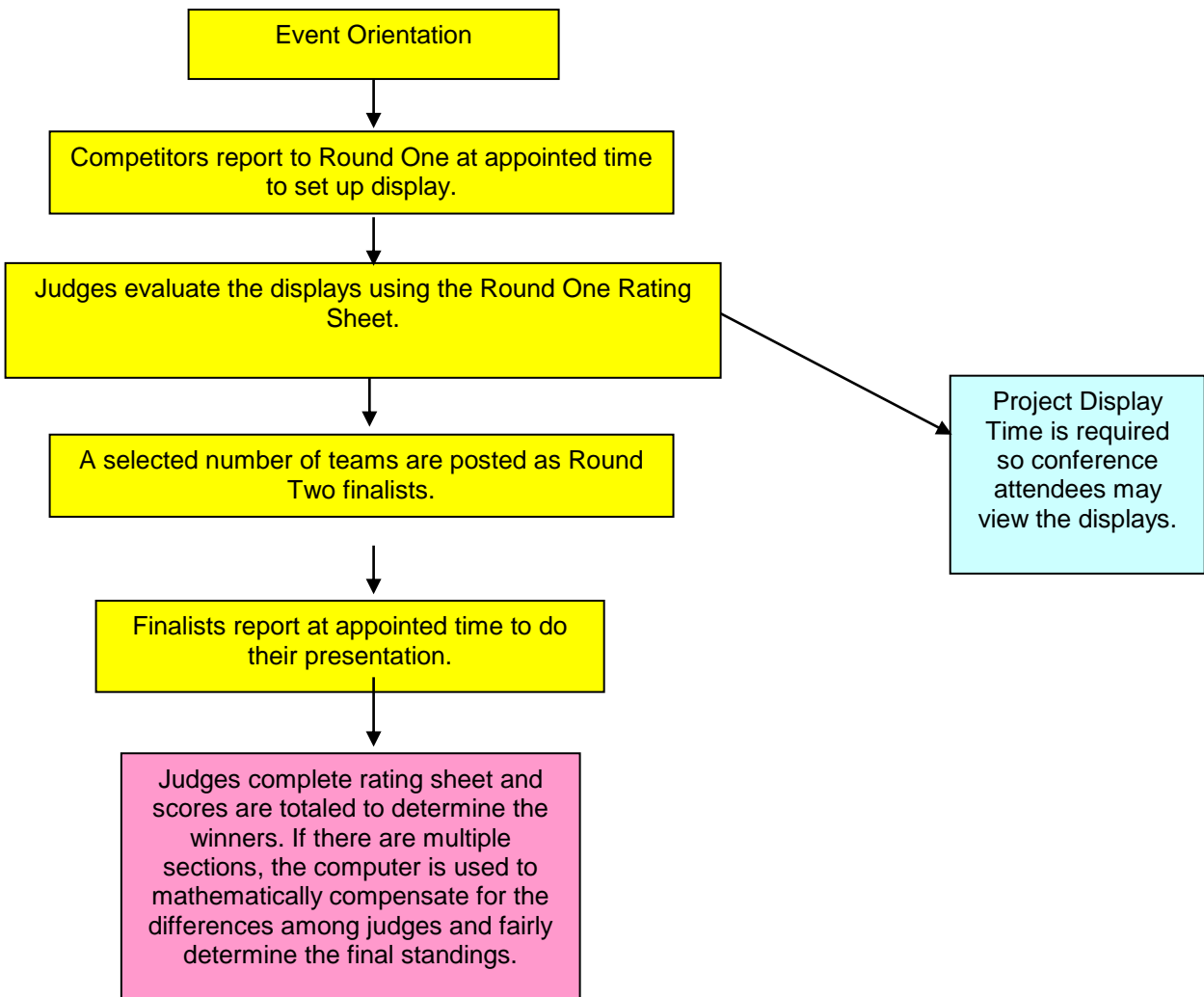
Required Personnel (Per Section):

- One Event Manager per event
- One Section Leader per section
- One Timekeeper per section
- One-two Judges per section – one should be a health professional.
- One-two event assistants per section
- One QA to provide quality assurance for the event by ensuring that the guidelines are followed and all event documents are complete.

Facilities, Equipment and Materials Checklist (Per Section):

- One table per team (6' tables) or two teams per table (8' tables) or banquet rounds, usually placed in one long row per section.
- Two - three chairs per display or table (for judges during the competitor presentation.)
- Calculators (if needed), clip board and pencils for judges
- Tape measure
- Team numbers for tables
- Rating sheets – one per judge per team
- Evaluation Forms – competitor, judge, and personnel
- #2 lead pencils with eraser to complete evaluations
- Flash card for 1 minute remaining
- Stopwatch, one per section
- Copy of guidelines for judges

Event Flow Chart



Icon Key

	Team event – Minimum and maximum number of team members.
	Plagiarism or copyright violation is prohibited.
	A computer is used at the ILC to provide a statistically fair method for balancing scores when multiple sections are scheduled.
	At the ILC, a Project Display Time will be offered for this event.
	Round One scores are used to advance competitors to Round Two at the ILC.

HOSA Style Sheet, Adapted from APA style

This style sheet is designed to make it easier for the HOSA member in events that require APA formatting and references. Since the American Psychological Association (APA) is the most commonly used resource in the health sciences, this information is modified from the APA style. More information may be found at <https://owl.english.purdue.edu/owl/resource/560/01/>.

Your references should be double-spaced. This page is single spaced to save space.

Parenthetical Reference

Place the parenthetical reference at the end of the sentence but before the final period, using author's last name and year of publication. For example, "...in the hospital" (Belkin, 2003). For anonymous authors, the shortened version of the title replaces the author's last name in the text citation. For example, "...in a rainy day" (Meteorologist, 2012). For personal interviews or emails, cite in-text only (S. Smith, personal communication, August 15, 2014), not on your references page.

Reference Guidelines

Your ONE PAGE 'References' title should be centered and sources alphabetized by the author's last name, first initial from the left margin. Hanging indents should be used for sources requiring multiple lines. Alphabetize anonymous authors according to the first main word in the title. See examples below:

Book by Two or More Authors

Wischnitzer, S., & Wischnitzer, E. (2005). *Top 100 health care careers: Your complete guidebook to training and jobs in allied health, nursing, medicine, and more (2nd ed.)*. Indianapolis, IN: Jist Publishing.

Format of On-Line Entries*

Author or editor last name, first initial. (year, month date posted). Article or web page title. *Book, journal or website title*. Printed version information or volume (issue number), pages if applicable. Retrieved from <DOI or http information>.

Example: Web Site (Professional)

ESPN.com. (1999, Nov 10). *ESPN Internet Ventures*. Retrieved from <http://espn.go.com>.

Example: Article from a Professional Journal Online

Sitzler, B. (2015). Taking helmets off: To decrease risk. *NATA News*, 27(10), 12-14. Retrieved from <http://digital.ipcprintservices.com/publication/?i=&p=&l=&m=14775&l=1&ver=&pp>.

***Note:** If you do not have a section of information for an Internet reference, move up the URL or to the home page to find it. If it is not there, just skip it and move to the next piece of information. If there is no date listed, use (n.d.). Be sure you gather as much information possible for the above format.

HEALTH CAREER DISPLAY JUDGE'S ROUND 1 RATING SHEET

Section # _____ Team # _____ Division: _____ MS _____ SS _____ PSC/Collegiate

Judge Signature: _____

Items Evaluated	Points Possible						Points Awarded
	Superior	-----	Poor				
1. Display board is 36" high x 48" wide x 24" deep, made of foam or corrugated cardboard.	5 (True)		0 (False)				
2. Electricity/battery power is NOT used	10 (True)		0 (False)				
3. Display is a health career	5 (True)		0 (False)				
4. Includes Works Cited Page	5 (True)		0 (False)				
5. Nothing is overlapping the sides of the display table, with the exception of the table drape.	5 (True)		0 (False)				
6. Display/equipment is safe and poses no hazards	5 (True)		0 (False)				
<i>If any of the above items are not met, the competitor does <u>not</u> advance.</i>							
8. Display							
A. Display provides an overview with accurate and important information that clearly describes the career/cluster.	10	8	6	4	2	0	
B. Creativity and originality	10	8	6	4	2	0	
C. Artistic/design value	10	8	6	4	2	0	
D. Display information was easy to follow, neat, and concise, and spelled correctly.	10	8	6	4	2	0	
TOTAL POINTS	75	-----	0				

HEALTH CAREER DISPLAY JUDGE'S ROUND 2 RATING SHEET

Section # _____ Team # _____ Division: _____ MS _____ SS _____ PSC/Collegiate

Judge Signature: _____

Items Evaluated	Points Possible						Points Awarded
	Superior	-----	-----	-----	-----	Poor	
1 Oral Presentation							
A. Career information presented in a clear and concise manner.	10	8	6	4	2	0	
B. Oral presentation demonstrates insight and a deep understanding of the career or career cluster.	10	8	6	4	2	0	
C. Team members were able to share stories, examples, and experiences that illustrate the career or career cluster, and how the career fits into the healthcare system.	10	8	6	4	2	0	
D. A variety of methods were used to complete the career research.	5	4	3	2	1	0	
E. Voice (volume/grammar) and enthusiasm.	10	8	6	4	2	0	
F. Appearance, poise, eye contact, gestures.	10	8	6	4	2	0	
2 Display							
A. Artistic/design value	10	8	6	4	2	0	
B. Creativity and originality	10	8	6	4	2	0	
C. Display information was easy to follow, neat, concise and spelled correctly.	10	8	6	4	2	0	
D. Display provides an overview with accurate and important information that clearly describes the career/cluster.	10	8	6	4	2	0	
TOTAL JUDGE POINTS	95	-----	-----	-----	-----	0	
POINTS GIVEN BY EVENT PERSONNEL:							
• Display time was attended	5					0	
• All guidelines were followed							
TOTAL POINTS	100	-----	-----	-----	-----	0	