

# Medical Terminology

## ***New for 2018-2019***

At ILC, [photo ID](#) must be presented prior to competing.

- Purpose** To encourage HOSA members to improve their ability to identify, spell, define and apply the prefixes, suffixes, roots and anatomy, physiology, pathophysiology and occupations related to the health community.
- Description** This event shall be a written test dealing with selected terms common to health professions and health specialties. Competitors will recognize, identify, define, interpret and apply medical terms in a 100 item multiple choice test with 20 tie-breakers for the Secondary and Postsecondary/Collegiate division and a 50 item multiple-choice test with 10 tie-breakers for the Middle School division. Written test will measure knowledge and understanding at the recall, application and analysis levels. Higher-order thinking skills will be incorporated as appropriate.
- Dress Code** Competitors must be in official HOSA uniform or in proper business attire. Bonus points will be awarded for [proper dress](#).
- Rules and Procedures**
1. Competitors in this event must be active members of HOSA-Future Health Professionals and in good standing in the division in which they are registered to compete (Middle School, Secondary or Postsecondary/Collegiate).
  2. Competitors must be familiar with and adhere to the "[General Rules and Regulations of the HOSA Competitive Events Program \(GRR\)](#)."
  3. **Test Plan:**

Roots, prefixes, suffixes, and combining forms	45%
Overview of Body	5%
Skeletal	5%
Muscular	5%
Respiratory	5%
Digestive	5%
Cardiovascular & Lymphatic	5%
Nervous/Special Senses	5%
Endocrine	5%
Reproductive	5%
Integumentary	5%
Urinary	5%
  4. The official references for selection of all terms for the Secondary/Postsecondary Collegiate division shall include:
    - [Ehrlich, Ann. Medical Terminology for Health Professions, Cengage Learning, Latest Edition.](#)
    - [Taber's Cyclopedic Medical Dictionary. Edited by Donald Venes and Clayton L. Thomas, M.D. F.A. Davis Company, Latest edition.](#)
    - [Stedman's Medical Terminology. Edited by Judi Nath, Lippincott Williams & Wilkins, Latest edition.](#)

The official references for selection of all terms for the Middle School division shall include:

- [Davies, Juanita J. Illustrated Guide to Medical Terminology, Cengage Learning. Latest edition.](#)
- [Gyls, Barbara and Regina Masters. Medical Terminology Express: A Short-Course Approach. FA Davis/BE Publishing. Latest edition.](#)

NOTE: *States/regions may use a different process for testing, to include but not limited to pre-conference testing, online testing, and testing at a computer. Check with your Area/Region/State for the process.*

5. A series of twenty (20) tie-breaking questions will be administered with the original test for the Postsecondary/Collegiate division. A series of ten (10) tie-breaking questions will be administered with the original test for the Middle School division. In case of a tie, successive sets of five tie-breaker questions will be used until a winner is determined. In the tie-breaker, correct spelling is required for an item to be considered correct.
6. All competitors shall report to the site of the event at the time designated for the event orientation and test. The test will immediately follow the orientation. At ILC, [photo ID](#) must be presented prior to competing. **No proxies will be allowed for the orientation.**
7. [Test Instructions](#): Competitors will be given instructions on the use of the Scantron form. After instructions have been given to the competitors, they will be notified to start the test. There will be a maximum of **90 minutes** to complete the test for the Postsecondary/Collegiate division. There will be a maximum of **60 minutes** to complete the test for the Middle School division. There will be a verbal announcement when there are 15 minutes remaining for the test period. Competitors may be excused from the testing site promptly after completion of the test.

**Competitor Must Provide:**

- Event guidelines (orientation)
- Two #2 lead pencil with eraser
- [Photo ID](#)

**FOR SPECIFICS ON EVENT MANAGEMENT SEE [MANAGING COMPETITIVE EVENTS](#)**

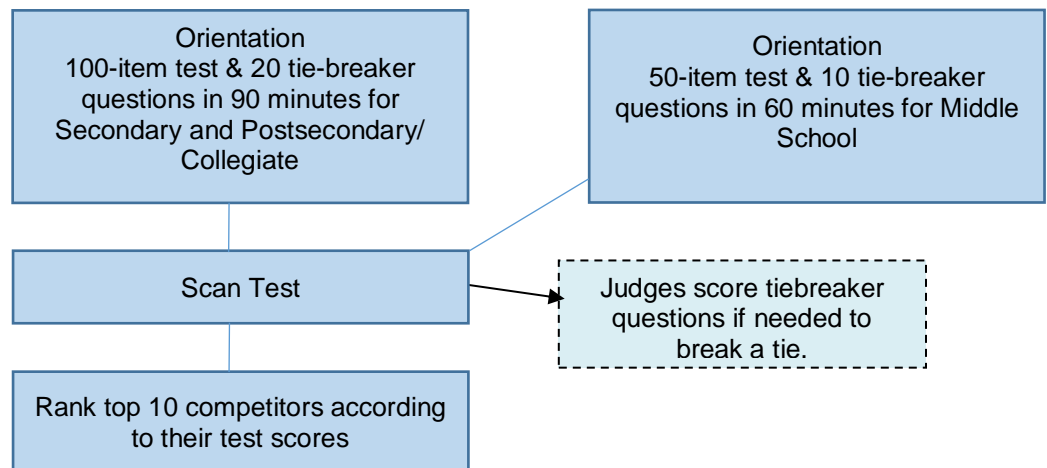
**Required Personnel:**

- One Event Manager
- One QA to provide quality assurance for the event by ensuring that the guidelines are followed and all event documents are complete.
- Proctors for Testing – Approximately one proctor for 20 competitors
- Event assistants as needed

## Facilities, Equipment and Materials:

- One room to accommodate the total number of competitors
- Tables/chairs or schoolroom desks/chairs for total number of competitors
- Table/chairs for event personnel to provide for registration and materials distribution
- List of competitors for check-in
- One pre-numbered test per competitor
- Scantron/answer forms - one copy per competitor
- Timer or clock
- Evaluation Forms – competitor and personnel
- #2 lead pencils with eraser to complete evaluations (event personnel)

## Event Flow Chart



## Sample Test Questions

1. The suffix for 'breathing' is:
  - A. -cide
  - B. -ion
  - C. -pnea
  - D. -stasis
  
2. The study of the structure, composition and function of body tissues is:
  - A. biology.
  - B. cytology.
  - C. endocrinology.
  - D. histology.
  
3. The surgical suturing of a muscle is:
  - A. myoplasty.
  - B. myolysis.
  - C. myorrhaphy.
  - D. myotonia.